

Tapcon

Head Style: Countersunk Head

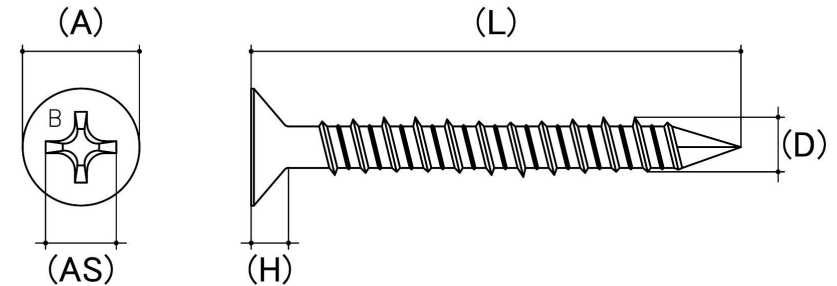
Material: Carbon Steel

Class Grade: Low Tensile Class 5.8

Material Finish: R1000 Silver Coating

Corrosion Protection Level: Excellent

Internal External: External



*Cad Drawings shown for graphic representation only.**

| Size | Length (L) (mm) | Head Diameter (A) (mm) | | Head Height (H) (mm) | | Drill Hole Size (mm) | Drive Size (AS) | sku (Part Number) |
|------|--------------------|---------------------------|-------|-------------------------|------|-------------------------|-----------------|----------------------|
| | | Min | Max | Min | Max | | | |
| M5 | 32 | 9.10 | 9.50 | 3.80 | 4.20 | 4 | PH2 | 65TCC532R |
| M5 | 45 | 9.10 | 9.50 | 3.80 | 4.20 | 4 | PH2 | 65TCC545R |
| M5 | 58 | 9.10 | 9.50 | 3.80 | 4.20 | 4 | PH2 | 65TCC558R |
| M5 | 70 | 9.10 | 9.50 | 3.80 | 4.20 | 4 | PH2 | 65TCC570R |
| M6.5 | 45 | 12.10 | 12.50 | 5.00 | 5.40 | 5 | PH2 | 65TCC6545R |
| M6.5 | 58 | 12.10 | 12.50 | 5.00 | 5.40 | 5 | PH2 | 65TCC6558R |
| M6.5 | 70 | 12.10 | 12.50 | 5.00 | 5.40 | 5 | PH2 | 65TCC6570R |
| M6.5 | 83 | 12.10 | 12.50 | 5.00 | 5.40 | 5 | PH2 | 65TCC6583R |
| M6.5 | 100 | 12.10 | 12.50 | 5.00 | 5.40 | 5 | PH2 | 65TCC65100R |

Disclaimer:

Dimensional data and technical information was obtained from publicly available sources and not acquired through standard agencies. It has been completed and compiled for reference purposes only; where discrepancies are found they are subject to change without notice. Bolt & Nut Australia makes no warranties or representations regarding the accuracy and validity of the compiled information and data. Contact the relevant standard authorities for accurate and detailed information.

* Cad Drawings may not reflect diameter, thread length or overall length.

© Bolt & Nut Australia Pty Ltd. All rights reserved.

Version: 05 Aug 2024